



ZONAL EDUCATION OFFICE - VADAMARADCHY

Second Term Examination - 2019

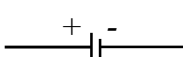
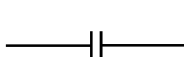



Grade : 07

Science

Time : 2 hrs

Part I

Select the most suitable answer

- 1) Which is not a flowering plant?
1) Rosa 2) Thema 3) Grass 4) Fern
- 2) What is the SI unit of electric current?
1) Ampere 2) Volt 3) Faraday 4) Joule
- 3) Which is not an electric source?
1) Galvanometer 2) Drycell 3) Vehicle battery 4) Simple cell
- 4) Symbol of a capacitor is
1)  2)  3)  4) 
5) What is the main function of androecium?
1) Attracts insects 2) Produces ovules
3) Produces pollens 4) Protects the parts of flower
- 6) Acids
1) turns red litmus in to blue
2) turns blue litmus into red
3) turns red litmus in to yellow
4) do not change the colour of blue litmus
- 7) Which property of water is used when using water in vehicle radiators?
1) A good solvent 2) A medium for living
3) a coolant 4) a conductor
- 8) What is the colour of pH paper used to identify acids and bases in the laboratory?
1) Yellow 2) Blue 3) Red 4) purple
- 9) Which is not a characteristic of the Images formed by the mirror shown in the figure
 1) Virtual 2) Erect
3) laterally inverted 4) smaller than the object
- 10) Which is not a correct method to use a compound light microscope
1) Fix the prepared slide on the stage
2) First, observe the specimen through lower power objective lens
3) Use both the eyes to observe through eye piece
4) Finally, use coarse adjustment to obtain clear image

- 11) The mirror used by dentist is
 1) Concave mirror
 2) Convex mirror
 3) plane mirror
 4) None of the above
- 12) Which of the following statements is / are correct
 statement A - Sound travels through vacuum
 statement B - speed of sound is greater than the speed of light in the air
 statement C - sound needs a medium to travel
 1) A only
 2) B only
 3) C only
 4) Band C only
- 13) The instrument which produces sound by the vibration of memberane
 1) Guitar
 2) Drum
 3) Flute
 4) Thampura
- 14) The structure which is common to respiratory system and digestive system of human
 1) Trachea
 2) bronchus
 3) pharynx
 4) oesophagus
- 15) Which gas is found in atmosphere at higher percentages
 1) Nitrogen
 2) Oxygen
 3) Carbondioxide
 4) Argon
- 16) Which is the structural and functional unit of an organism?
 1) Cell
 2) Tissue
 3) Organ
 4) System
- 17) How many images are formed when two plane mirrors are kept at the angle of 60°
 1) 3
 2) 4
 3) 5
 4) 7
- 18) Energy transformation that occurs when producing electricity from wind energy is
 1) Electric energy \longrightarrow kinetic energy
 2) kinetic energy \longrightarrow Electric energy
 3) Chemical energy \longrightarrow Electric energy
 4) potential energy \longrightarrow Electric energy
- 19) Which is not included in mammals?
 1) Squirrel
 2) Dolphin
 3) salamander
 4) Bat
- 20) Which of the following action does not help to minimize air pollution?
 1) Reducing the use of fossil fuel
 2) filtering the gases of industries before releasing them to the atmosphere
 3) Burning forest for cultivation
 4) Recycling the garbages

(20X2 40 புள்ளிகள்)

Part II A

Fill in the blanks

Common salt, Bases, vibration, Electromagnetic induction, Electric energy

- 1) Sound is produced by the _____ of something
- 2) _____ shows the pH value 14
- 3) Dry cell changes chemical energy into _____
- 4) _____ is produced by evaporating sea water
- 5) Electricity is produced in a dynamo by _____

(5X2)

Mark (✓) if the statement is correct and mark (✗) if it is incorrect

- 1) Crab is an invertebrate. ()
- 2) All the organisms are multi cellular. ()
- 3) Out of the layers of atmosphere, mesosphere has lower temperature. ()
- 4) Efficiency of a dynamo can be increased by increasing the turns of the coil. ()
- 5) Living specimens can be observed only through Electron microscopes. ()

(5X2)

Part II B

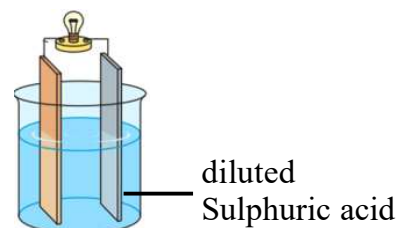
Answer any four questions

- 1) The chemical substances, we use at home as well as in the laboratory can be classified as acids, bases, and neutral substances.
 - 1) Write 02 acidic substances we use at home.
 - 2) Write 02 basic substances we use at home.
 - 3) Write 02 natural indicators.
 - 4) Fill the chart

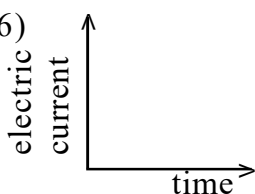
Indicators	Colour with acids	Colour with bases
(a) Blue litmus	_____	_____
(b) Red litmus	_____	_____
(c) phenolphthalein	_____	_____
(d) Methyl orange	_____	_____

(10 marks)

- 2) Structure of a simple cell is shown below
 - 1) What are the metals used as electrodes?
 - 2) Name the positive and the negative electrodes
 - 3) Give 02 weaknesses of the cell
 - 4) Write 02 electric sources
 - 5) State whether our domestic power supply is direct current or alternating current



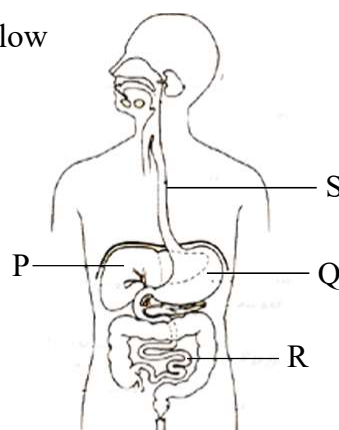
- 6) Draw the graph that obtained when the above current is plotted against time



(10 marks)

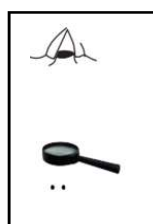
3) Diagram of the Human digestive system is given below

- 1) Name the parts P, Q, R and S
- 2) Out of them, which part absorbs digested food?
- 3) In which part food moves with peristalsis movement?
- 4) Write two systems of human body other than digestive system
- 6) Write down the organisational levels of an organism in order



(10 marks)

4) An experiment carried out by students using hand lenses is shown below



A



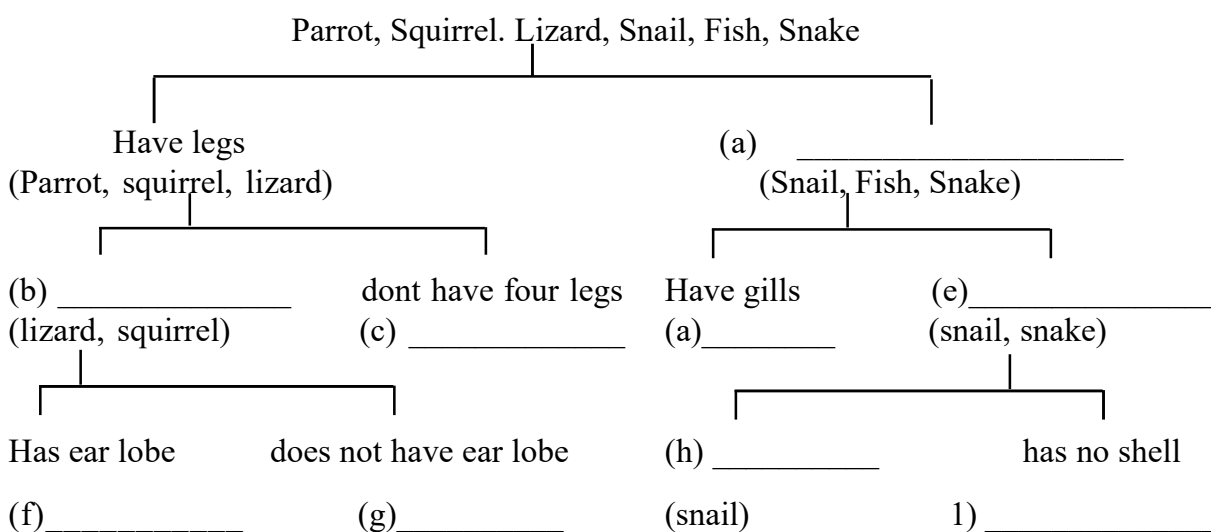
B

- 1) Which lens functions as a simple microscope?
- 2) Which structure shows higher magnification?
- 3) Name the laboratory instrument that is produced using two lenses like the structure B
- 4) How much is the maximum magnification of the instrument that you mentioned in question 3
- 5) Write 02 factors that have to be considered when using this instrument in the laboratories
- 6) Name another magnifying instrument which has highest magnification.

(10 marks)

5) Dichotomous key is used to classify organisms.

- 1) Give one feature of dichotomous key
- 2) Complete the dichotomous key given below



(10 marks)