



## Central College - Anuradhapura

### Special Holiday Study Pack - II

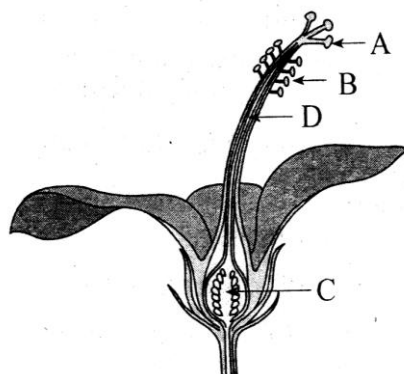
Grade 07

*Prepared by : Niluka Bogahawatta*

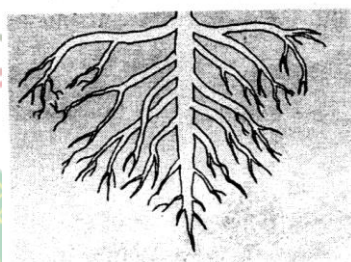
✎ **Answer the first questions and four more questions. You will get 16 marks for the first question and 11 marks for each other questions.**

(01) (A) Some student have drawn the vertical section of a shoe flower as shown in the figure.

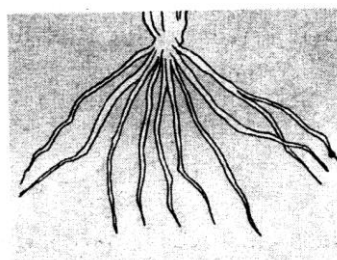
- (i) Identify A , B and C , D
- (ii) Write the parts belonging to androecium and gynoecium separately.
  - (a) Androecium      (b) Gynoecium
- (iii) Mention the functions of androecium and gynoecium
  - (a) Androecium      (b) Gynoecium
- (iv) Mention the functin for each of and gynoecium.
  - (a) Sepals              (b) Petals



(B) A student has drawn following diagrams to study roots.



A



B

- (i) Name the special types of roots shown by A and B.
- (ii) Some roots store food. Give one exaple for each which food is stored in ,
 

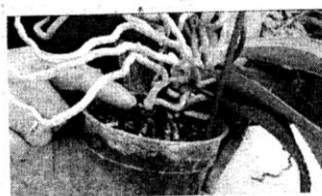
A. Tap root      -

B. Lateral root      -
- (iii) Roots of leguminosae plants are adapted for a special function.
  - (a) What is the function ?
  - (b) What are the special structures in those roots?

(iv) Identity the special type of roots shown in diagrams below



B



(02) (A) A group of student prepared the following set – up to check whether electricity

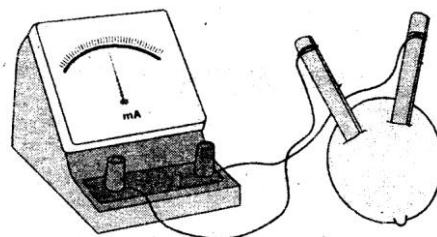
can be produced by lime fruit.

(i) What are the types of plates connected to the lime fruit ?

(ii) What is the name of the compound in lime fruit contributes to produce electricity.

(iii) What are the observations you can make which shows that electricity is produced ?

(iii) What is the energy transformation happen there ?



(B) The diagram shows a setup prepared by some students to find the direction of the current.

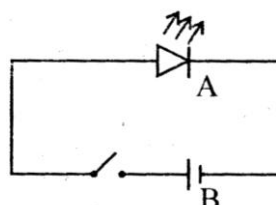
(i) Identify A and B

(ii) What can you observe when the switch is on ?

(iii) What can be observed when the terminals of B are exchanged ?

(iv) What is the direction of the conventional current according to the above activity ?

(v) What can you observe when a small motor is connected instead of A to the circuit ?



(03) Marks (✓) if the statement is correct or (✗) if the statement is incorrect.

1. Water is a good coolant ( )
2. Cancer is a vertebrate ( )
3. The body of the hawk is streamline ( )
4. Ladies finger contains acidic substances ( )
5. A piece of red litmus turns into blue when put into a salt solution. ( )
6. Treacle is made by evaporating the water from toddy. ( )
7. Capacitors are used to store electric charges. ( )
8. The electromagnetic induction occurs in a electricity generator ( )
9. The unit measuring the electric current is farad ( )
10. Dipterocarpus is a plant propagated by water ( )
11. Ginger has a underground stem ( )

© ANURADHAPURA CENTRAL COLLEGE  
All Rights Reserved. Allowance is made for "fair use" for purposes such as teaching, scholarship, education and research. Any reproduction or illegal distribution of the content in any form will result in immediate action against the person concerned.

